



MAJOR PLANT HOLDING



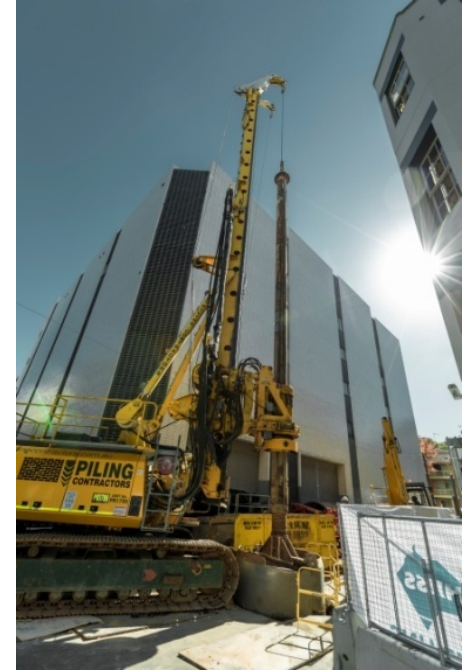
November 2015

Building the Foundations of Australia

Piling Contractors has a range of equipment within our company that is used for pile driving, drilling and other foundation construction techniques.

Hydraulic Drilling Rigs (Crawler Mounted)

Make	Model	Approx. Working Weight	Approx. Rotary Torque	No. Units
Bauer	BG40V	140t	40tm	1
Bauer	BG30V	100t	30tm	1
Bauer	BG28V	96t	28tm	3
Bauer	BG28-H	96t	28tm	1
Bauer	BG24-H	85t	24tm	1
Mait	HR130	38t	11tm	1
Mait	HR180	60t	23tm	1
Total # Units				9



Sheet Piling Rigs

Make	Model	Approx. Working Weight	Capacity	Approx. Rotary Torque	No. Units
RTG	RG16T	50t	2400rpm/4t	8.0tm	1
Total # Units					1

Crane Attached Drills

Make	Model	Approx. Working Weight	Approx. Rotary Torque	No. Units
PC	CAH500	130t	50tm	1
Calweld MTC	CAH300	110t	31tm	1
Calweld	CH-H125	95t	19m	1
Calweld	CH75	85t	12tm	1
Total # Units				4

Hydraulic Driving Rigs (Crawler Mounted)

Make	Model	Approx. Working Weight	Approx. Mast Height (m)	No. Units
Liebherr	LRB400	160t	40m	2
Nissha Tripodal	DH658-135m	120t	36m	1
BM800 / Nissha	M70D-2	125t	37m	1
PCQ	Ackerman 24-27	85t	27m	1
Total # Units				5



Other Specialised Leaders

Make	Model	Maximum Pile Diameter	Approx. Mast Height (m)	No. Units
PC	Hydraulic Rotating Marine Leader	1200mm	12m	1
Total # Units				1

Wick Drain / Ground Engineering Rigs

Make	Model	Approx. Working Weight	Approx. Mast Height (m)	No. Units
Leaders	Crane Mounted	35t	18m / 25m	2
Leaders	Excavator Mounted	38t	12m	2
Total # Units				4

Cranes (Crawler, Others)

Make	Model	Approx. Working Weight	Capacity	No. Units
Liebherr	H885D	120t	120t	1
Liebherr	H883D	120t	120t	1
Kobelco	BM800	90t	90t	1
Kobelco	BM700	65t	65t	1
Kobelco	CKS1100	110t	110t	1
Hitachi	KH180	50t	50t	2
Hitachi	KH150	40t	40t	1
Franna	AT-20	19.5t	20t	2
Total # Units				10

Hydraulic Hammers

Make	Model	Capacity	No. Units
BSP	CG300	20t	1
BSP	CG240	16t	1
BSP	CG180	12t	2
Nissha	Nissha NH100M	10t	1
Piling Contractors	PCQ-10T	10t	1
BSP	CX110	9t	1
Uddcomb	Uddcomb H8H	8t	1
Junttan	HHK 7-9 SS	7 - 9t	1
Hydraquip	Hydraquip HQ7	7t	1
Piling Contractors	PC6.4T	6.4t	1
Hydraquip	Hydraquip HQ5	5t	1
Total # Units			12

Diesel Hammers

Make	Model	Approx. Working Weight	Capacity	No. Units
Delmag	D62-22	12.2t	22tm	2
Total # Units				2

Hydraulic Vibrators

Make	Model	Capacity	No. Units
ICE	1423L	2300rpm / 1.7t	1
FAV	44-50	1600rpm / 5.2t	1
ICE	44-50	1600rpm / 5.2t	1
Total # Units			3

Diaphragm Wall Equipment and Bentonite Plant

Make	Model	Capacity	No. Units	Details
DW Rope Grab	Kalbend	Jaw widths 600mm x 3 and 800mm x 2	3	
DW Rope Grab	Stein	Jaw widths 600mm, 800mm	1	
DW Hydraulic Grab	Bauer DHG-B	Jaw Widths 600mm, 800mm, 1000mm, 1200mm	1	
DW Stop Ends	Kalbend	Widths	600mm, 800mm, 1000mm and 1200mm	Various Lengths
Desander	Caviem	105m ³ /hr	1	
Desander	Sotres	90m ³ /hr	1	
Desander	ZX200	200m ³ /hr	2	
Bentonite Tanks	Kalbend	77m ³	7	12 x 2.4 x 2.7m
Bentonite Mixer	Various	3m ³	2	
Bentonite Silos	Kalbend	Various	14	

Falsework

No. of Bays	Bay Dimensions (effective footprint)	Rated Capacity	Total Quantity lin.m.
23	13.5m x 4.0m	100t	310
15	12.0m x 6.0m	200t	180
15	9.0m x 6.0m	300t	135

Other

Make	Model	Approx. Working Weight	Capacity	No. Units
Transcrete	P90 / 100 Concrete Pump	4t	65 m ³ /hr	9
Transcrete	P120 Concrete Pump	6t	90 m ³ /hr	2
Total # Units				11





PILING CONTRACTORS

Head Office

NSW

SA

VIC

WA

Phone: 07 3285 5900

Phone: 02 9499 7700

Phone: 1300 341 576

Phone: 1300 654 414

Phone: 08 9361 4051

