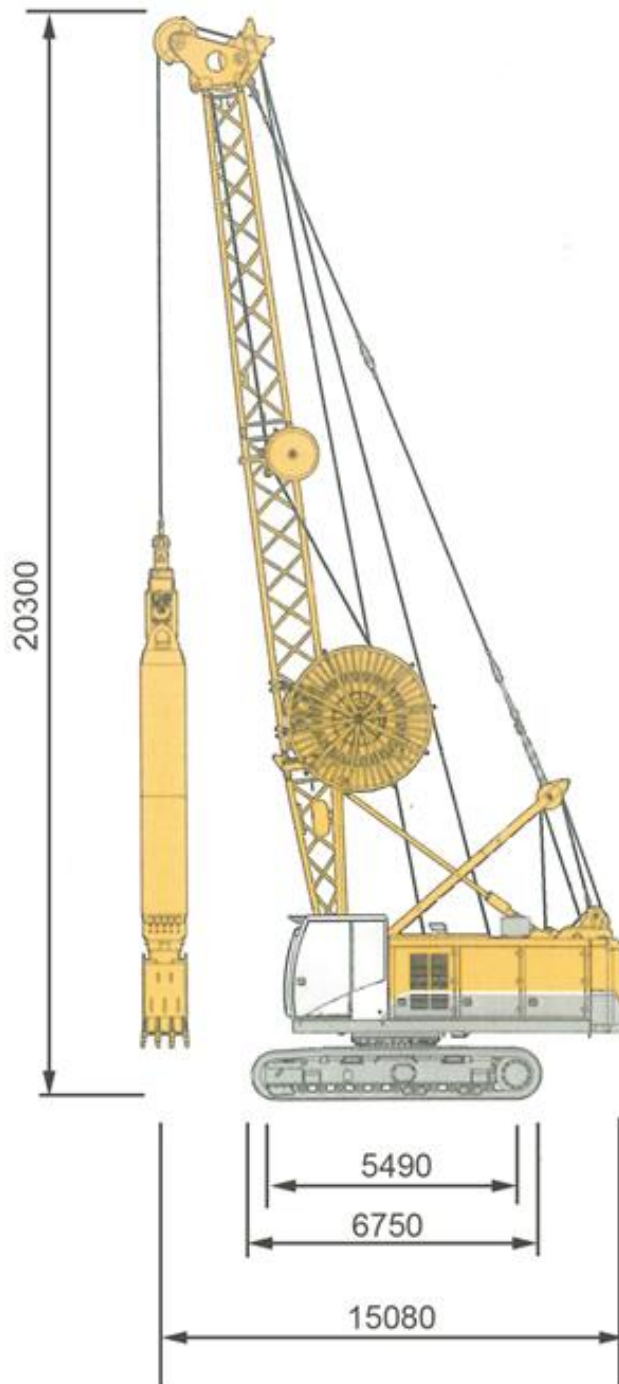


LIEBHERR 885 WITH DHG-B



Manufacturer:	Liebherr
Model:	HS 885HD
Engine Power:	450 kW
Main Winch Line Pull:	300 kN
Auxilliary Winch Line Pull:	70 kN
Grab Manufacturer:	Bauer
Grab Model:	DHG-B
Overall Height:	~20.3m
Overall Length ⁽¹⁾ :	~15.08m
Operating Weight:	4.92m
Operating Weight (approx) ⁽²⁾	147.4T
Crawler Length:	6.75m
Contact Length:	5.49m
Crawler Width ⁽³⁾ :	3.92m
Line Pull:	1.00m

Notes

⁽¹⁾ Overall length measured from centre of wall position at maximum rig extention

⁽²⁾ The operating weight includes the weight of DHG-B and spoil (assumed)

⁽³⁾ Crawler width quoted is during operation, tracks are retracted during transport

Specific Tooling DHG-B:	23.5T
Nominal LG Allowance:	3.0T
Nominal Spoil Allowance:	5.4T