

HITACHI KH180 CRAWLER CRANE



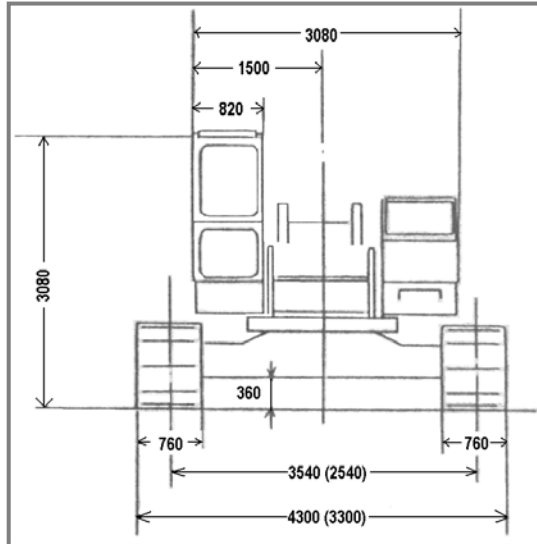
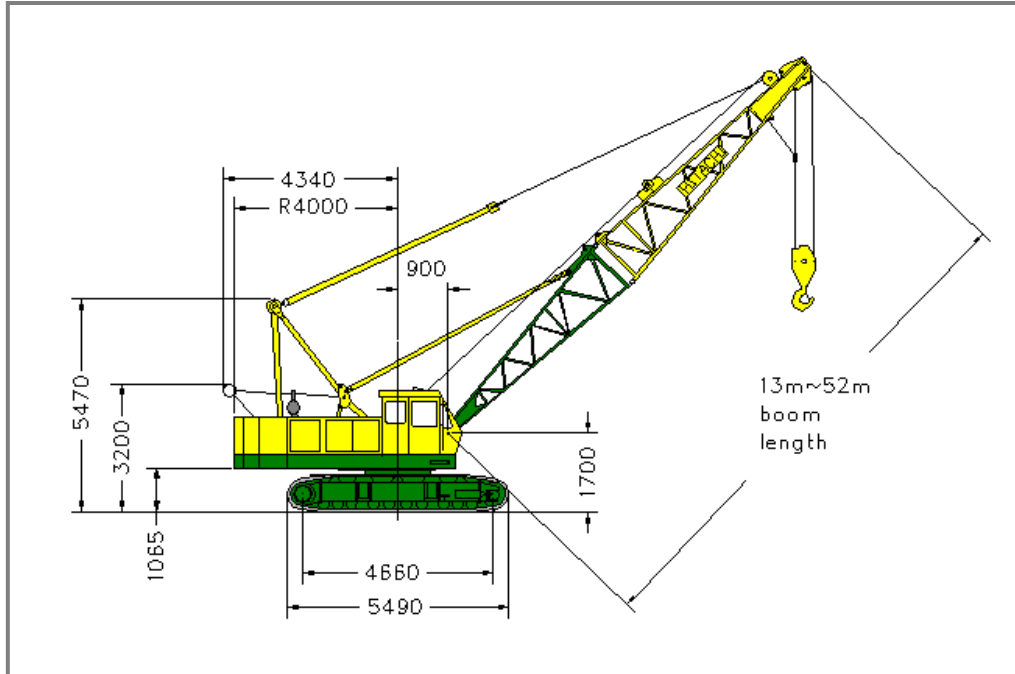
ADDITIONAL INFORMATION:

General Service Crane

Bored Piling using Crane Rig Attachments such as CH125, CH75 & CA26

Driven Piling using Ackermann Leaders

HITACHI KH180 CRAWLER CRANE



Equipment Type:	Hitachi KH180-2
Serial No.:	2030421 / P0019834
Unit No.:	CC135
Manufactured Date:	1981
Operational Weight:	47.0t
Base Machine Weight:	29.0t
Counter Weight/s:	15.0t (3 pieces)

Boom Weight:	50ft for 24.0 – 2.4t / 60ft for 27.0 – 3.0t
Track Pad Width:	760mm
Crawler Width:	3300mm retracted 4300mm extended
Main Winch Max Line Pull:	5.6t
Auxiliary Winch Max Line Pull:	5.6t