

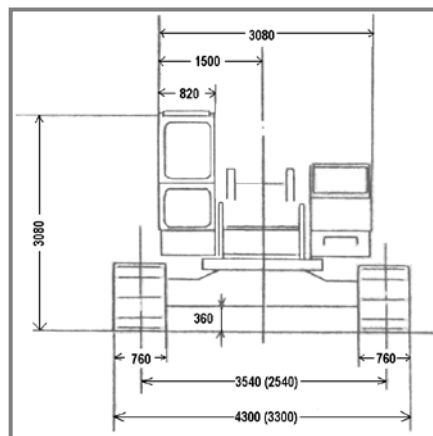
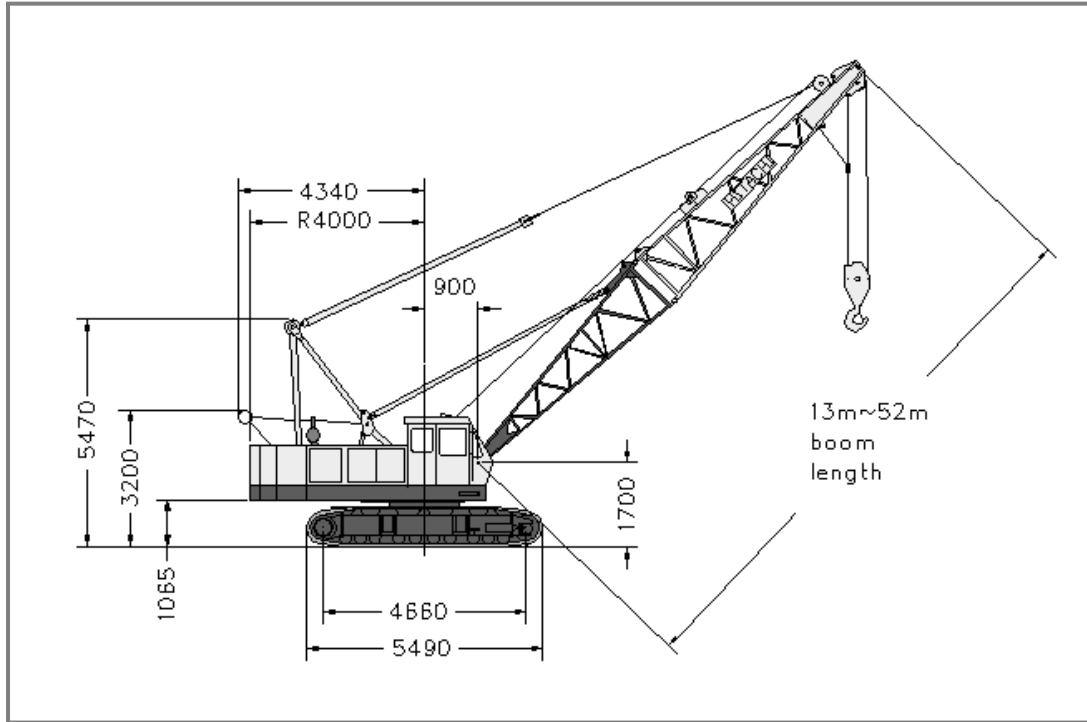
HITACHI KH180 + CH125 CRAWLER CRANES



ADDITIONAL INFORMATION:

Bored Piling

HITACHI KH180 + CH125 CRAWLER CRANES



Equipment Type:	KH180-2 + CH125	Boom Weight:	2.4t
Serial No.:	2030421 / P0019834	CH125 Weight:	9.5t
Unit No.:	CC135	Kelly Bar Weight:	8.0t
Manufactured Date:	1981	Track Pad Width:	760mm
Operational Weight:	70.5t	Crawler Width:	3300mm retracted 4300mm extended
Base Machine Weight:	29.0t	Main Winch Max Line Pull:	5.6t
Counter Weight/s:	15.0t (3 pieces)	Auxiliary Winch Max Line Pull:	5.6t
Power Pack Weight:	4.1t + Power Pack Support – 2.5t = 6.6t		