

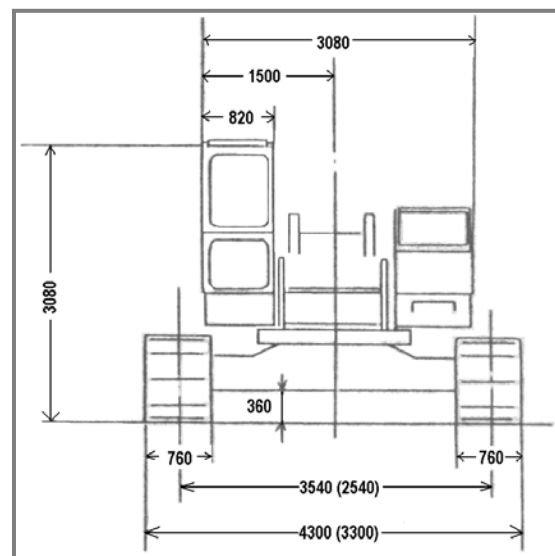
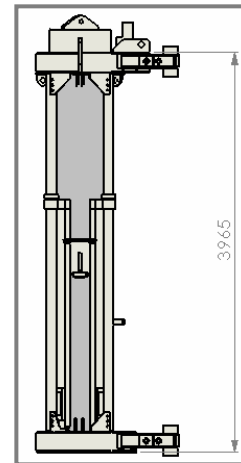
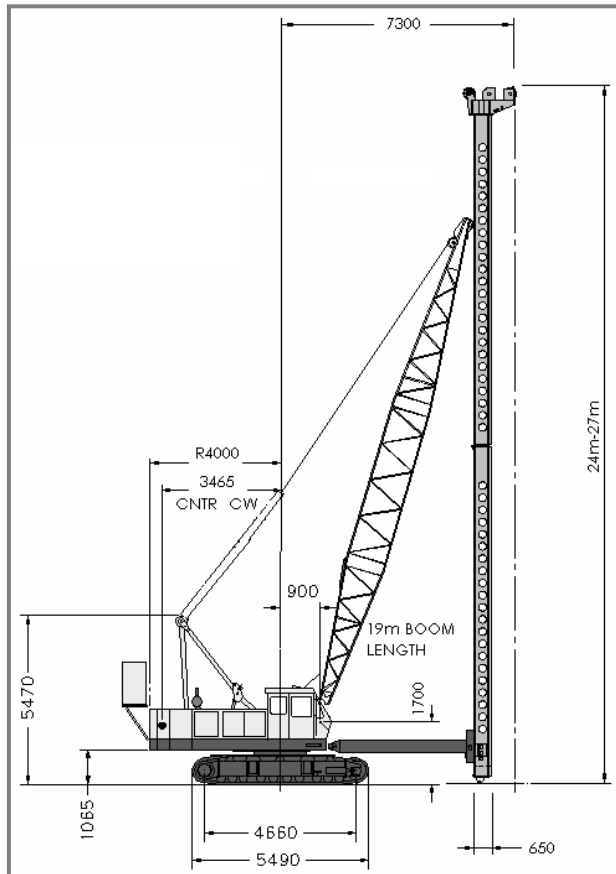
HITACHI KH180-2 + ACKERMANN + PCQ10
CRAWLER CRANES



ADDITIONAL INFORMATION:

Driven Piling

HITACHI KH180-2 + ACKERMANN + PCQ10



Equipment Type:	KH 180-2 + Ackermann + PCQ10
Serial No.:	2030421 / P0029834
Unit No.:	CC135
Manufactured Date:	1981
Operational Weight:	80.0t
Base Machine Weight:	29.0t
Counter Weight/s:	15.0t (3 pieces)
Boom Weight:	50 ft – 24.0 – 2.4t / 60 ft – 27.0 – 3.0t
Raker Arm:	3.4t

Leader Weight:	Ackermann Leader 8.2t
Hammer Weight:	PCQ10 – 15.0t
Power Pack Weight:	4.1t
Power Unit Cradle:	2.5t
Track Pad Width:	760mm
Crawler Width:	3300mm retracted 4500mm extended
Main Winch Max Line Pull:	5.6t
Auxiliary Winch Max Line Pull:	5.6t