

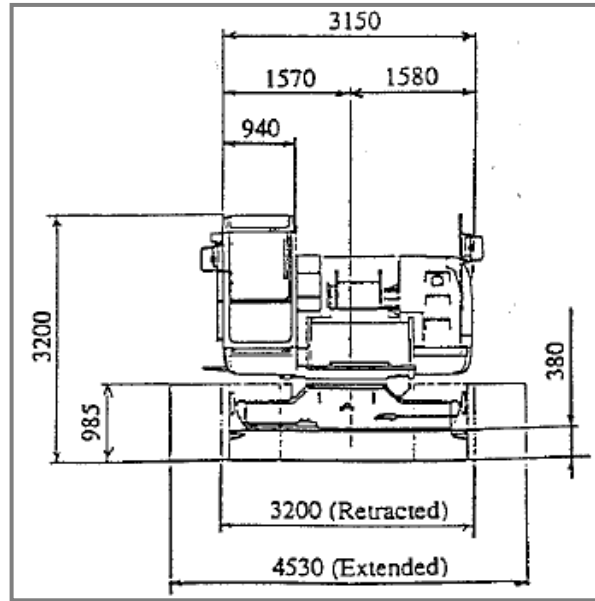
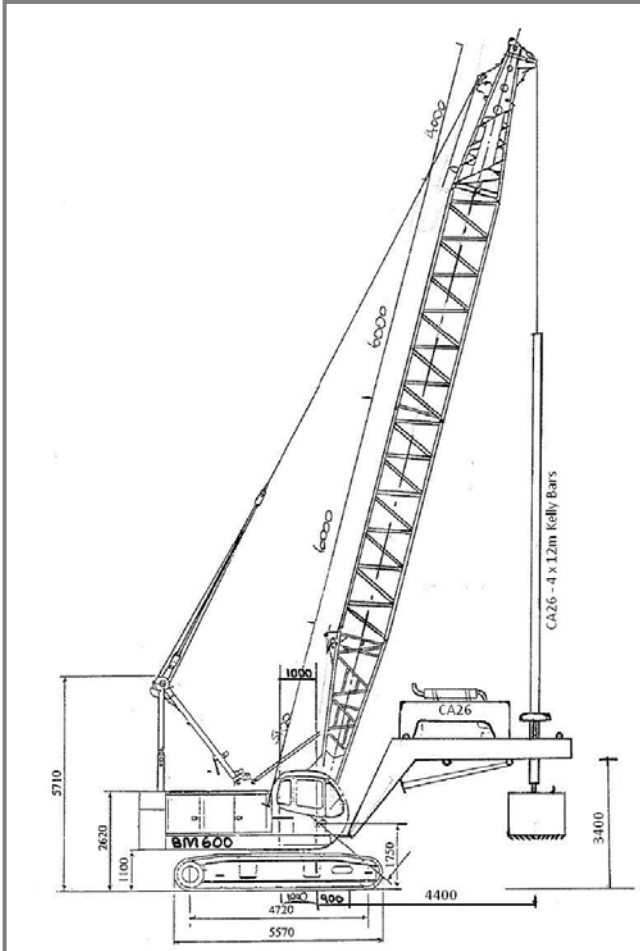
## KOBELCO BM600 + CA26 CRANE MOUNT DRILL



ADDITIONAL INFORMATION:

Bored Piling

## KOBELCO BM600 + CA26 CRANE MOUNT DRILL



Equipment Type:	BM600 & CA26
Serial No.:	GB01237 / P0019835
Unit No.:	CC237
Manufactured Date:	1996
Operational Weight:	78.3t
Base Machine Weight:	35.8t (excl c/weight & attachment)
Counter Weight/s:	9.9t + 5.0t = 14.9t
Power Pack Weight:	4.6t

Boom Weight:	19m / 55ft – 4.0t
Kelly Bar Weight:	8.0t
CA26 Drill Attachment:	11.0t
Track Pad Width:	760mm
Crawler Width:	3200mm closed 4530mm spread
Main Winch Max Line Pull:	6.5t
Auxiliary Winch Max Line Pull:	6.5t