

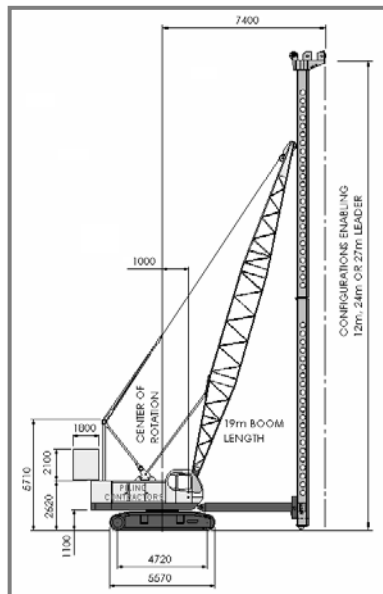
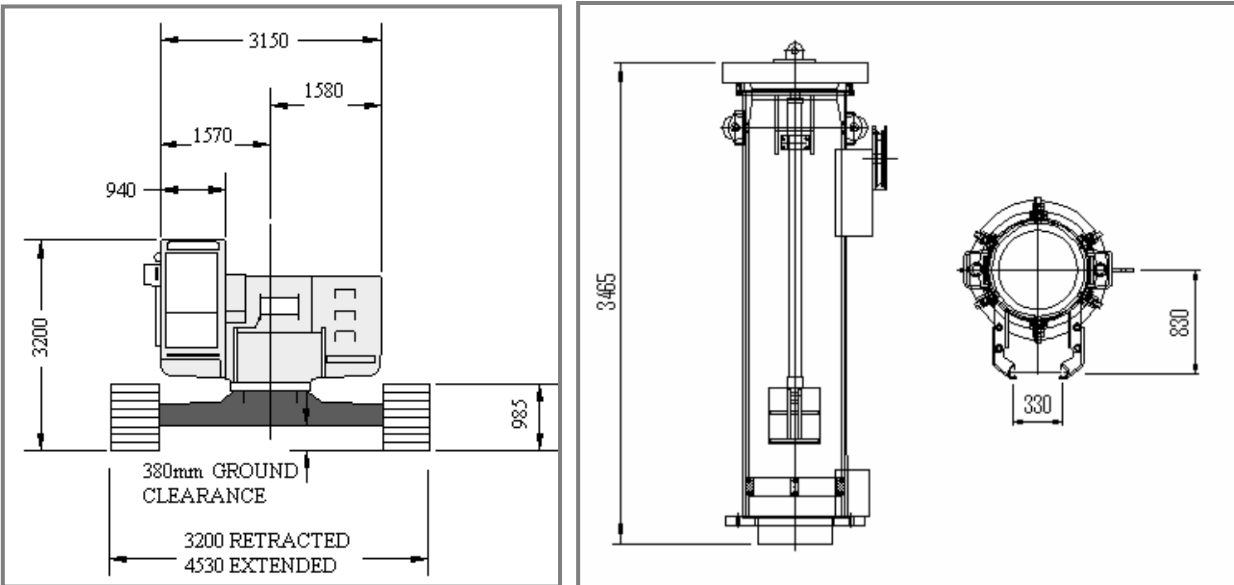
BM600 + ACKERMANN + PCQ10 CRAWLER CRANE



ADDITIONAL INFORMATION:

Driven Piling

BM600 + ACKERMANN + PCQ10 CRAWLER CRANE



Equipment Type:	BM600 + Ackermann Leader + PCQ10 Hammer
Serial No.:	GB01237 / P0019835
Unit No.:	CC237
Manufactured Date:	1996
Operational Weight:	83.5t
Base Machine Weight:	35.8t (excl c/weight & attachment)
Counter Weight/s:	9.9t + 5.0t = 14.9t
Power Pack Weight:	4.6t

Boom Weight:	19m / 55ft – 4.0t
Leader Weight::	Ackermann – 24m (incl cathead) 8.2t
Hammer Weight:	15.0t
Raker Bar:	2.5t
Track Pad Width:	760mm
Crawler Width:	3200mm closed 4530mm spread
Main Winch Max Line Pull:	22mm / 6.5t
Auxiliary Winch Max Line Pull:	22mm / 6.5t